



Power Transmission Unit

A better alternative for direct driven pumps

Save energy with correct rpm

Many pumps in the industry are running with incorrect rpm, and because of this consume far too much energy. For example a 10% reduction of the rpm gives 27% lower power consumption.

Simple and exact maintenance

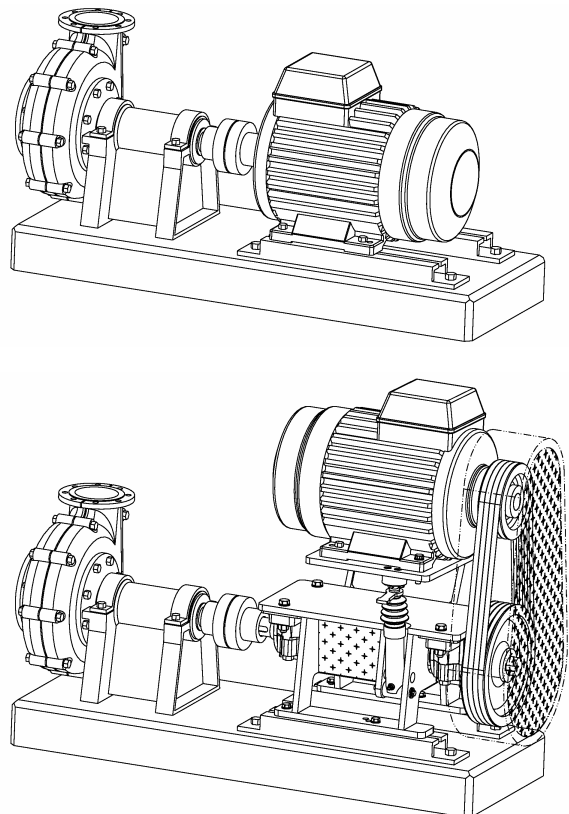
The Gemex-concept is integrated in this product, which means highest precision and efficiency in the belt drive and long life-time on the components.

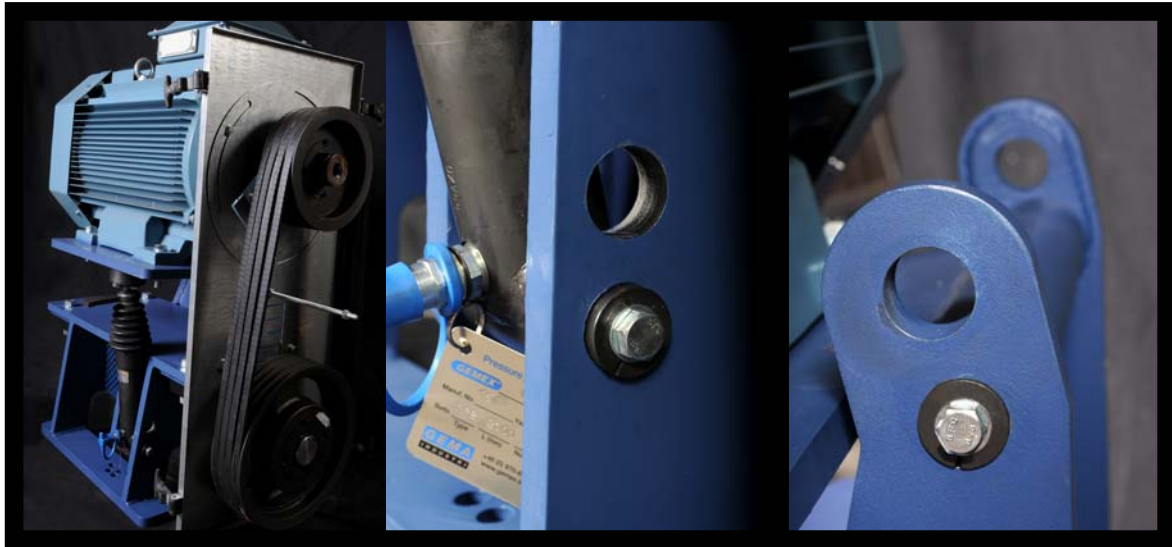
Easy to change the rpm of the pump

After rebuilding or process changes it is easy to change the rpm on the belt transmission to get the highest efficiency.



Gemex PTU IEC 200-225





- Alignment and the belt tension is measured only once, and after that the result is always correct.
- Changing belts takes maximum five minutes and a re-tensioning less than one minute. The only tools needed are a hydraulic hand pump and a hammer.
- The unit is flexible to be able to handle many different gearing ratios. It comes in different sizes from IEC 200 to IEC 400.
- With Gemex Power Transmission Unit the motor is replaced with a flexible gearing unit with belt transmission, and the motor placed on top.
- The dimension of the Gemex PTU give it the same foot print and shaft height as the motor, in order to make it easy to install. Just bolt it on where the motor used to be.
- The unit can also be used to gear up the rpm of the motor.

Please contact us for more information and proposals.

